



#### APPLICATIONS:

## Cold Behavior

LUBRICATION OILS

BASE STOCK OILS

PAO

DISTILLATE FUELS

LIQUID PETROLEUM PRODUCTS

BIODIESEL

## AUTOMATED Cloud & Pour Point Analyzer

#### ADVANTAGES:

- **High precision with 0.1°C resolution**
- **Optimize blending operations**
- **Ultra low temperature testing to -95°C**
- **No cleaning required**
- **Fast results; high throughput**
- **Built-in 10 position sample changer with single button initiation**
- **No external coolers required**

#### MPP 5GS

ISL's automated MPP5Gs provides highly accurate cloud and pour point result using only 0.5 ml sample, in an ultra compact, easy to use instrument that's ready to work whenever and wherever you are.

Simply place the sample in a disposable vial into the 10 specimen sample changer and press the OK key. **No special programming** or expected points is required. Results are available in 20 minutes for a -30°C pour point.

The MPP 5Gs **significantly increases productivity** and **improves repeatability and reproducibility** with a 0.1°C resolution. ISL's 5Gs instruments eliminate external coolers and allow testing as low as -95°C.

The user-friendly MPP 5Gs is ideal for use in applications where standard laboratory instrumentation cannot be applied, or is restricted due to insufficient response time, small sample volume availability, or untrained staff with little exposure to lab equipment.

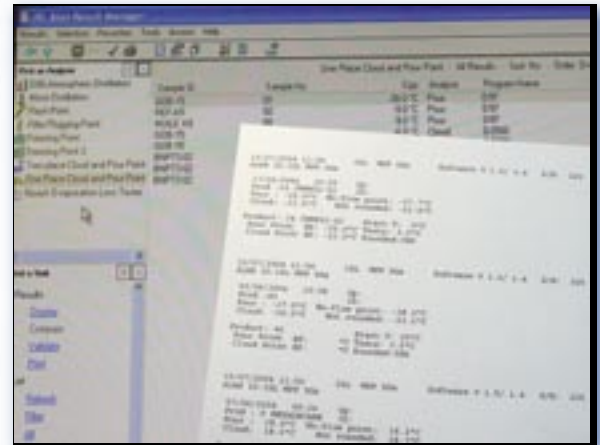
#### METHODS:

**Correlates to**  
ASTM D 97  
ASTM D 2500  
ASTM D 5950  
ASTM D 5771  
ASTM D 5772  
ASTM D 6892  
ISO 3015  
ISO 3016  
IP 15  
IP 219  
IP 444  
JIS K 2269

# MPP 5GS SIMULTANEOUS CLOUD & POUR POINT ANALYZER

## High throughput, powerful precision, ultra low temperature testing

SPECIFICATIONS:																	
<b>Ordering Information</b>	MPP 5Gs Apparatus with built-in cooling system and sample changer. Includes alphanumeric, solvent-proof keypad and easy to read LCD with real time test results. Delivered completely ready for operation																
<b>Standard Test Methods</b>	Correlates to ASTM D 97, D 2500, D 5950, D 5853, D 5771, D 5772, D 6892; ISO 3015, 3016; IP 15, IP 219, IP 444; JIS K 2269																
<b>Operation</b>	<table border="0"> <tr> <td>Detection</td> <td><i>Cloud Point:</i> optical detection</td> </tr> <tr> <td></td> <td><i>Pour Point:</i> pressure differential</td> </tr> <tr> <td>Cooling</td> <td>Integrated cooling system</td> </tr> <tr> <td>Test Intervals</td> <td>Continuous 0.1°C resolution</td> </tr> <tr> <td>Temperature Range</td> <td>Sample temperature +45°C to -95°C (to -139°F)</td> </tr> <tr> <td></td> <td>Sample preheating max. 60°C (140°F)</td> </tr> <tr> <td>Temperature Measurement</td> <td>°C or °F</td> </tr> <tr> <td>Password Security</td> <td>Multi-level password protection</td> </tr> </table>	Detection	<i>Cloud Point:</i> optical detection		<i>Pour Point:</i> pressure differential	Cooling	Integrated cooling system	Test Intervals	Continuous 0.1°C resolution	Temperature Range	Sample temperature +45°C to -95°C (to -139°F)		Sample preheating max. 60°C (140°F)	Temperature Measurement	°C or °F	Password Security	Multi-level password protection
Detection	<i>Cloud Point:</i> optical detection																
	<i>Pour Point:</i> pressure differential																
Cooling	Integrated cooling system																
Test Intervals	Continuous 0.1°C resolution																
Temperature Range	Sample temperature +45°C to -95°C (to -139°F)																
	Sample preheating max. 60°C (140°F)																
Temperature Measurement	°C or °F																
Password Security	Multi-level password protection																
<b>Calibration</b>	Automatic temperature calibration routine 20 point temperature probe correction table Programmable calibration frequency																
<b>Documentation</b>	On-screen and printed reports (Centronics link) Connections to PC or RS (delivered as standard) Up to 99 results in memory; unlimited storage with PC Enhanced data management with optional ALAN™																
<b>Utility Requirements</b>	<table border="0"> <tr> <td>Electrical</td> <td>90–240 VAC, 200W, 50/60 Hz</td> </tr> <tr> <td>Dimensions</td> <td>25cm W x 65cm D x 31cm H (10" x 24½" x 15½")</td> </tr> <tr> <td>Weight</td> <td>28 kg (62 lbs)</td> </tr> </table>	Electrical	90–240 VAC, 200W, 50/60 Hz	Dimensions	25cm W x 65cm D x 31cm H (10" x 24½" x 15½")	Weight	28 kg (62 lbs)										
Electrical	90–240 VAC, 200W, 50/60 Hz																
Dimensions	25cm W x 65cm D x 31cm H (10" x 24½" x 15½")																
Weight	28 kg (62 lbs)																
<b>Options &amp; Accessories</b>	<table border="0"> <tr> <td>ALAN™ Software</td> <td>Enables multi-analyzer networking with centralized operation and data management</td> </tr> <tr> <td>Printer</td> <td>Ticket printer, 40 columns; (115 or 230V)</td> </tr> <tr> <td>Sampling Support</td> <td>Micro pipette 0 - 1 ml</td> </tr> <tr> <td>Reference Materials</td> <td>A wide range of CRM materials for cold flow performance testing are available from PAC</td> </tr> </table>	ALAN™ Software	Enables multi-analyzer networking with centralized operation and data management	Printer	Ticket printer, 40 columns; (115 or 230V)	Sampling Support	Micro pipette 0 - 1 ml	Reference Materials	A wide range of CRM materials for cold flow performance testing are available from PAC								
ALAN™ Software	Enables multi-analyzer networking with centralized operation and data management																
Printer	Ticket printer, 40 columns; (115 or 230V)																
Sampling Support	Micro pipette 0 - 1 ml																
Reference Materials	A wide range of CRM materials for cold flow performance testing are available from PAC																



### SIMPLE, PRECISE TESTING

- Compact and portable; easily moves throughout your lab to areas ideal for your unique workflow
- Quick test setup: on screen prompts, pre-programmed settings
- Real-time display of test progress and result
- Completely self-contained, patented cooling system
  - saves energy
  - enables ultra-low temperature testing
  - eliminates heat, noise, external liquid connections and toxic coolant vapors of external cooling units

### RELIABLE PERFORMANCE & SUPPORT

- Probe correction table for 20 different temperatures
- Accommodates and enhances most rigorous quality control programs

### OPTIONAL PC CONTROL & MULTI-INSTRUMENT NETWORKING

- Centralizes control and data management of up to 31 ISL ALANready™ cold behavior, distillation & flash point instruments
- Automatically stores results to database with sorting and filtering capabilities
- Transmits results to external computer, network or LIMS with data extraction mask for each test program
- Compatible with other Windows-based applications
- Stores test programs, calibrating conditions, and service parameters for easily trackable quality verification

Due to continuing product development, specifications subject to change at any time without notice.

All products are  compliant.

### FOR ADDITIONAL INFORMATION:

#### AMERICAS:

**PAC** • 300 Bammel Westfield Road, Houston, Texas, USA 77090  
Phone: 800.444.TEST | 281.580.0339 | Fax: 281.580.0719  
sales@pacip.com | www.pacip.com

#### EUROPE, ASIA, AFRICA, MIDDLE EAST, AUSTRALIA:

**INSTRUMENTATION SCIENTIFIQUE DE LABORATOIRE**  
BP 70285 - Verson - 14653 CARPIQUET Cedex - FRANCE  
Phone: (33) 2 31 26 43 00 | Fax: (33) 2 31 26 62 93  
sales@isl-france.com | www.pacip.com

YOUR LOCAL REPRESENTATIVE: